



YOUR CONFERENCE AT CASTLE PARK



WHERE DONCASTER PLAYS

And works, and learns, and
meets and eats, and sings and
dances, and celebrates and
commiserates, and says “I do”,
and “happy birthday to you”,
and keeps fit and never quits,
and whoops and cheers, across
the years, and gets together
and stays together.

Founded in 1875, we’ve built the ultimate
event space for our local community.
With your support, we’ve journeyed from
site to site, growing our team, facilities
and spaces.

Get in touch, and see for yourself what
the buzz is all about. Visit our spacious
suites and modern rooms in readiness
for your next event – each one
personally catered by our on-site chefs.

We look forward to seeing you soon.

CELEBRATES
FEASTS
SAYS “I DO”
WORKS
SAYS “I DO”
FEASTS
PLAYS
CELEBRATES
WORKS
SAYS “I DO”
FEASTS
PLAYS
CELEBRATES
WORKS



WHERE DONCASTER WORKS

Our conference rooms and executive boxes are recognised as some of South Yorkshire's most spectacular facilities.

With modern, airy suites, WiFi, large windows for natural daylight and free car parking, we offer everything you need for meetings of 2 to 350 people.

Our rooms are available with full and half day rates. And, if you wish, our on-site chefs can prepare a fresh breakfast or lunch tailored to your party's dietary requirements.

“

From arriving at the venue, we could not have been made more welcome. I had organised a meeting for 26 people and everything was absolutely spot on. Everything ran like clockwork and the team were constantly on hand to ensure everyone had everything they required to make the day a huge success.

MR AND MRS ASPDEN

”

A GUIDE TO OUR MEETING SPACES

Our rooms are available with full and half day rates. And, if you wish, our on-site chefs can prepare a fresh breakfast or lunch tailored to your party’s dietary requirements.

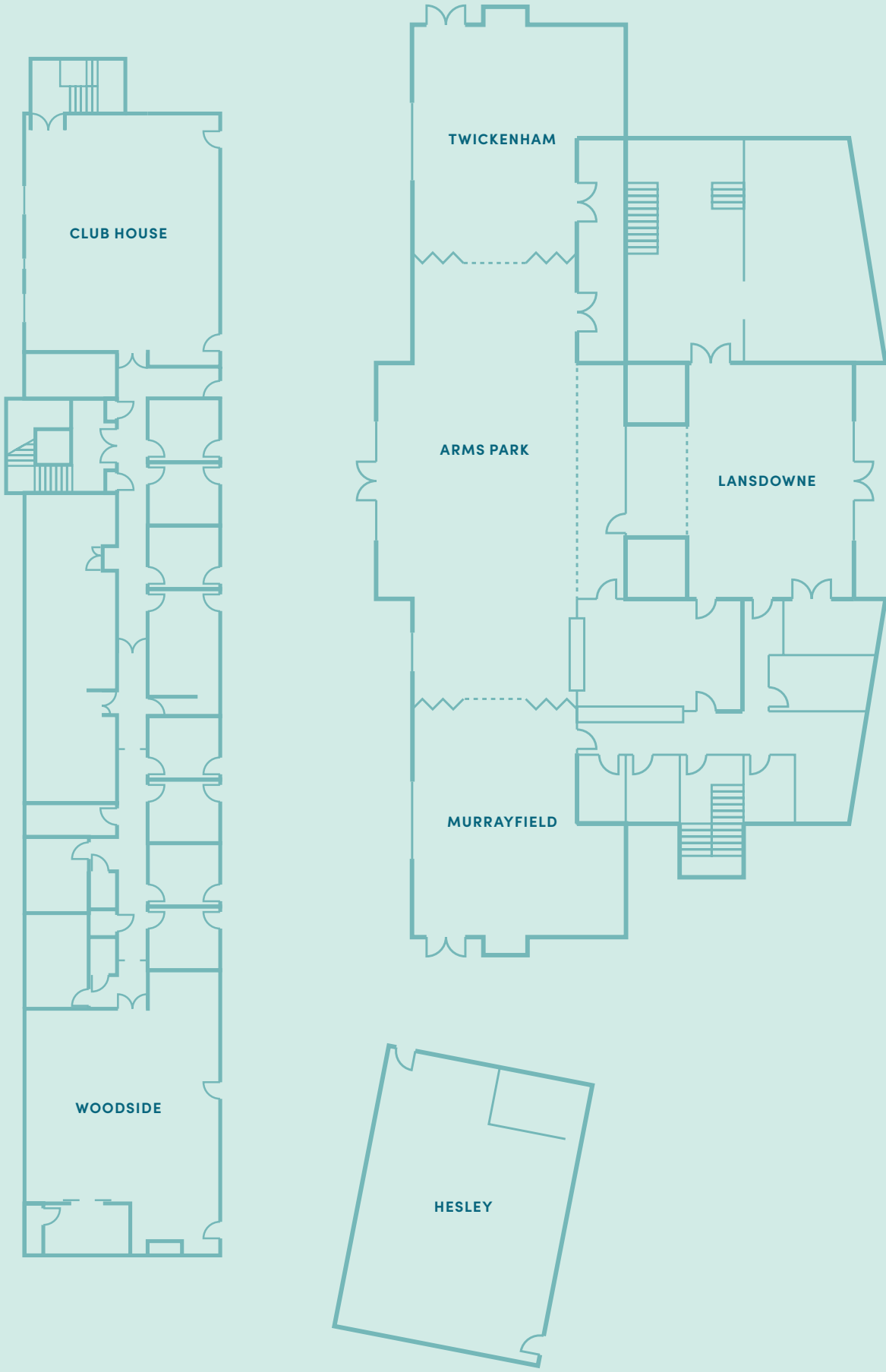
SUITE CAPACITY INFORMATION

We cater for a range of events from 2 to 350 people.

SUITE	SIZE	THEATRE	CABARET	BOARD ROOM	1/2 / FULL DAY RATES
Twickenham Suite	85m²	80 people	48 people	20 people	£150/£300
Murrayfield Suite	85m²	80 people	48 people	20 people	£150/£300
Lansdowne Suite	86m²	80 people	48 people	20 people	£150/£300
Arms Park Suite	169m²	150 people	120 people	50 people	£250/£500
Millennium Suite (incorporates Murray, Twickenham & Arms Suites)	425m²	350 people	240 people	80 people	£350/£700

WEST STAND

SUITE	SIZE	THEATRE	CABARET	BOARD ROOM	1/2 / FULL DAY RATES
Woodside	164m²	150 people	120 people	40 people	£250/£500
Club House	168m²	150 people	120 people	40 people	£250/£500
Single Syndicate	15m²	-	12 people	-	-/£50
Double Syndicate	27m²	25 people	20 people	16 people	-/£120



OUR CONFERENCE PACKAGES

We can also offer discounted rates for repeat bookings, please speak to our event coordinator for more information. We have included our different conference packages below.



CONFERENCE PACKAGE 1

£23.50 PER PERSON, MINIMUM OF 10 DELEGATES

PACKAGE INCLUDES

- Main room hire
- 4 refreshment breaks (1 included with lunch)
- Working lunch
- Water & cordials
- Stationery
- Projector
- Screen
- Flip chart

CONFERENCE PACKAGE 2

£26.00 PER PERSON, MINIMUM OF 10 DELEGATES

PACKAGE INCLUDES

- Main room hire
- 4 refreshment breaks (1 included with lunch)
- Working lunch
- Water & cordials
- Stationery
- Projector
- Screen
- Flip chart

CONFERENCE PACKAGE 3

£28.50 PER PERSON, MINIMUM OF 10 DELEGATES

PACKAGE INCLUDES

- Main room hire
- 4 refreshment breaks (1 included with lunch)
- Working lunch
- Water & cordials
- Stationery
- Projector
- Screen
- Flip chart

ADDITIONAL ITEMS

WE CAN ALSO PROVIDE ADDITIONAL EQUIPMENT HIRE TO MEET ALL OF YOUR TECHNICAL REQUIREMENTS

TECHNICAL EQUIPMENT

- TV video link onto large projector (Arms Park suite only) – **£50.00**
- Arms Park LCD projector & screen – **£80.00**
- Clubhouse & Woodside LCD projector & screen – **£80.00**
- Portable LCD screen & projector – **£65.00**
- Portable roving microphone – **£25.00**
- Technical support (full day) – **£270.00**
- Portable TV & DVD – **£25.00**
- Laptop – **£65.00**

NON-TECHNICAL EQUIPMENT

- Flip chart pad & pens – **£20.00**
- Lectern – **£15.00**

WHERE DONCASTER FEASTS

Discover our mouth-watering menus, freshly prepared in our state-of-the-art kitchen. We use locally-sourced ingredients to create bespoke dishes, tailored to all budgets and dietary requirements.

We have put a sample of our menu’s below but we can offer a comprehensive range of menu options from 2 or 3 course meals, to buffets of all varieties.

We would be happy to discuss your requirements in more detail so we can make sure your even is catered perfectly to suit your needs.

BREAKFAST MENU

£8.50 PER PERSON (FULL PRE-ORDER REQUIRED)

PACKAGE INCLUDES
CURED BACK BACON SANDWICH
GRILLED PORK SAUSAGE SANDWICH
FIELD MUSHROOM & TOMATO SANDWICH (V)
GRILLED VEGGIE SAUSAGE SANDWICH (V)
All served with HP Sauce & tomato ketchup
FRESH FRUIT
DANISH PASTRIES
TEA & COFFEE

All dietary requirements must be pre-ordered in advance including vegetarian, vegan and specific food allergies. Please note that food prepared here may contain the following ingredients: lupin, eggs, fish, peanuts, sesame, milk, mustard, cereals, nuts, celery & celeriac, soy beans, molluscs, crustaceans, sulphites & sulphur dextrose.

WORKING LUNCH

£8.25 PER PERSON (THREE SANDWICHES PER PERSON)

PACKAGE INCLUDES
SOFT BROWN & WHITE ROLLS FILLED WITH A SELECTION OF VARIOUS FILLINGS (3 per person)
SEASONED WEDGES & DIPS
FRUIT BASKET
TEA & COFFEE

HEALTHIER OPTIONS WORKING LUNCH

£9.00 PER PERSON

PACKAGE INCLUDES
CHEF’S HOMEMADE SOUP OF THE DAY
A SELECTION OF SAVOURY WRAPS (spinach, beetroot, tomato or plain wraps with assorted fillings)
FRUIT BASKET
TEA & COFFEE



HEALTHIER OPTIONS HOT BUFFET

£9.95 PER PERSON

PACKAGE INCLUDES
HOT JACKET POTATOES WITH A SELECTION OF FILLINGS OF BUTTER, CHEDDAR CHEESE & HOMEMADE CLASSIC COLESLAW (1 per person)
MIXED DRESSED SALAD
FRUIT BASKET
FLAPJACKS OR FRESHLY BAKED COOKIES
TEA & COFFEE

WORKING LUNCH

£13.50 PER PERSON / MINIMUM OF 20 DELEGATES

PACKAGE INCLUDES
CHOOSE FROM ONE MEAT AND ONE VEGETARIAN OPTION FROM THE BELOW
CHEF’S HOMEMADE DISH OF THE DAY
CASTLE PARKS FAMOUS COW PIE served with mushy peas, mint sauce & gravy
BRIE CRANBERRY & NUT WELLINGTON (V)
LASAGNE VERDI served with tossed salad leaf, coleslaw & garlic bread
VEGETABLE LASAGNE VERDI (V)
BBQ MARINATED CHICKEN BREAST served with cherry tomato, watercress & red onion salad
GOAT’S CHEESE & CARAMELISED RED ONION TART (V)
SEASONED WEDGES
FRUIT BASKET
FLAP JACKS OR FRESHLY BAKED COOKIES
TEA & COFFEE

A DEDICATED TEAM

We're a small team with a big heart. Together we love to host bespoke events with a personal touch. Please get in touch today if you'd like to discuss your requirements further.

Neil Holmes
General Manager

Neil has been here at Castle Park for almost 17 years and knows everything there is to know about the venue. In 2012, Neil was selected to manage the hospitality operations across the Olympic Park for the London 2012 Olympics and returned to Doncaster to share his experiences with the team.

Eleanor Hughes
Event Sales Manager

Eleanor joined the team in 2018 from previous roles in hotel sales. She has a 1st Class Honours Degree in Event and International Hospitality Management so you can trust your events will be safe in her hands.

Ashley Hartman
Front Office Manager

Ashley joined the team in 2018 and has also come from a hotel background. She will usually be your first port of call when you visit Castle Park via our reception desk, and Ashley can help with any initial event enquiries.

Mattine Sabzevari
Operations Manager

Matt joined the team in 2019 after 2 years at the Copthorne Hotel in Sheffield. Before that, he was the Operations Manager at Tesco, covering the North of England and was awarded Operations Manager of the Year for the 2017/18 financial year.

CONTACT US

Castle Park
Armthorpe Road
Doncaster
DN2 5QB

T: 01302 831388
E: events@castle-park.co.uk

castle-park.co.uk



NOTES

Castle Park
Armthorpe Road
Doncaster
DN2 5QB
T: 01302 831388
E: events@castle-park.co.uk

